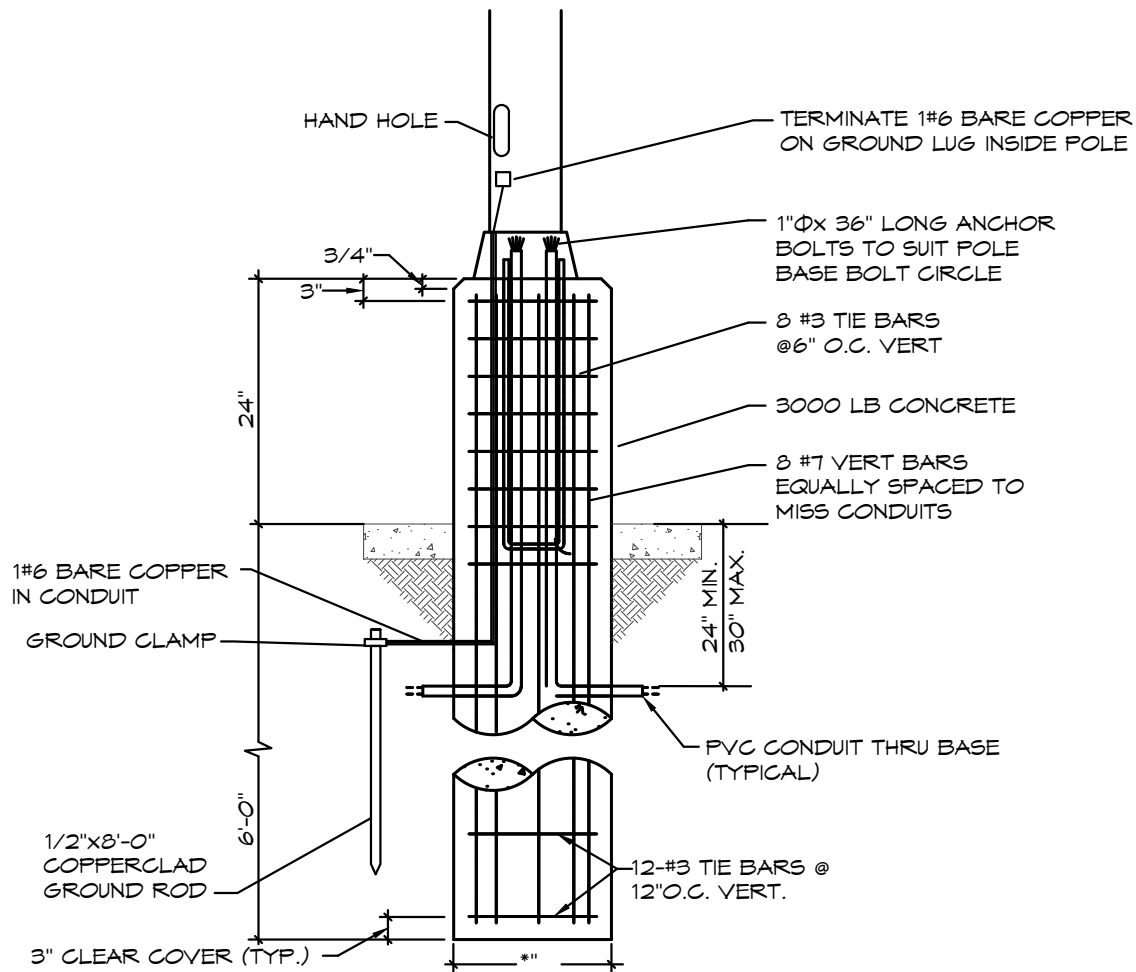


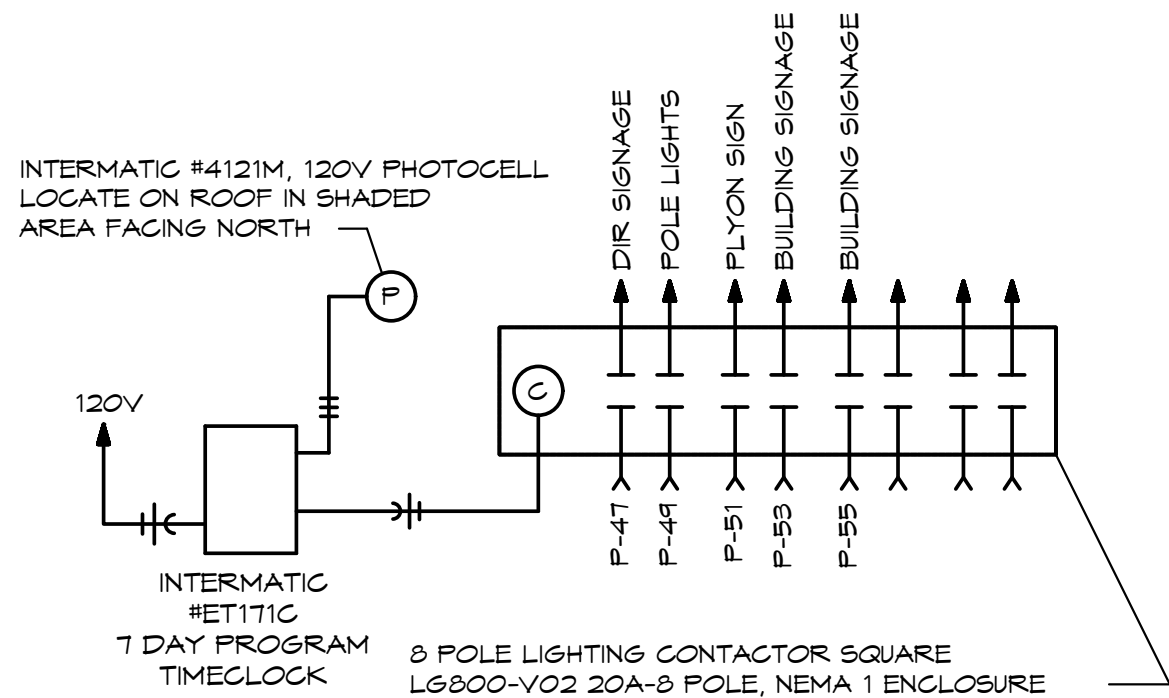
ELECTRICAL PLAN NOTES:

- 1 APPROXIMATE LOCATION OF EXISTING UTILITY POLE/NEW POLE MOUNTED TRANSFORMER
- 2 STUB UP CONDUIT AND CONNECT TO ORDER KIOSK AS REQUIRED.
- 3 ORDER KIOSK - VERIFY EXACT LOCATION. STUB UP AND EXTEND 3/4" CONDUIT WITH PULL STRING TO MEDIA CABINET. COORDINATE ALL ELECTRICAL REQUIREMENTS AND LOCATION.
- 4 2" UNDERGROUND TELEPHONE CONDUIT TO EXISTING TELEPHONE PEDISTAL FROM TELEPHONE BACKBOARD. COORDINATE EXACT ROUTING AND LOCATION AND TERMINATION POINT WITH TELEPHONE PROVIDER. CONDUIT PROVIDED AND INSTALLED BY ELECTRICAL CONTRACTOR.
- 5 ROUTE CIRCUIT TO PANEL INDICATED VIA LIGHTING CONTACTOR. SEE DETAIL ON THIS SHEET.
- 6 CONNECT TO POLE SIGN COMPLETE. PROVIDE WEATHERPROOF DISCONNECT PER NEC.
- 7 UNDERGROUND SECONDARY FEEDER FROM POLE MOUNTED TRANSFORMER TO ELECTRICAL SERVICE ENTRANCE. SEE ELECTRICAL RISER DIAGRAM. VERIFY LOCATION, ROUTING, DISTANCE & ALL REQUIREMENTS UTILITY COMPANY.
- 8 CONNECT TO DIRECTIONAL SIGNAGE PER MANUFACTURERS INSTRUCTIONS.

ELECTRICAL SYMBOLS LIST	
CIRCUITING & NOTES	
+48"	SPECIAL MOUNTING HEIGHT FOR ASSOCIATED DEVICE (CENTERLINE OF DEVICE)
GFI	GROUND FAULT CIRCUIT INTERRUPTER DEVICE
WP	WEATHERPROOF ENCLOSURE ON DEVICE
IS	ISOLATED GROUND DEVICE
[X]	ELECTRICAL FLOOR PLAN NOTE WITH DESIGNATION
2 LP	CONDUIT CONCEALED WHERE POSSIBLE OR AS NOTED, ARROWS INDICATE HOME RUN TO PANEL. CIRCUIT NUMBERS INDICATED
[Symbol]	#12 WIRE IN CONDUIT, UNLESS NOTED OTHERWISE ON DRAWINGS OR SPECIFICATION
[Symbol]	GROUNDING CONDUCTOR, #12 WIRE UNLESS NOTED OTHERWISE ON DRAWINGS OR SPECIFICATION
[Symbol]	CONDUIT ROUTED UNDER FLOOR/GRADE
LIGHTING	
[Symbol]	EMERGENCY THIN HEAD LIGHT FIXTURE
[Symbol]	EXIT LIGHT WITH DIRECTIONAL ARROWS INDICATED
[Symbol]	FLUORESCENT STRIP FIXTURE WITH TYPE DESIGNATION
[Symbol]	FLUORESCENT FIXTURE WITH TYPE DESIGNATION
[Symbol]	NIGHT LIGHT, CONNECT TO UNSWITCHED CIRCUIT
[Symbol]	CEILING OR RECESSED FIXTURE WITH TYPE DESIGNATION
[Symbol]	WALL MOUNTED FIXTURE WITH TYPE DESIGNATION
POWER DEVICES	
[Symbol]	DUPLEX RECEPTACLE, BOTTOM OF BOX AT 16" AFF, UNLESS NOTED OTHERWISE
[Symbol]	FOURPLEX RECEPTACLE, BOTTOM OF BOX AT 16" AFF, UNLESS NOTED OTHERWISE
[Symbol]	DEVICE MOUNTED ABOVE COUNTER AND/OR SPLASH GUARD
[Symbol]	HEAVY DUTY OUTLET - NEMA CONFIGURATION SIZE PER EQUIPMENT MANUFACTURER'S RECOMMENDATION
[Symbol]	PANEL BOARD, TOP OF BOX 6'-0" AFF
[Symbol]	JUNCTION BOX
[Symbol]	NON-FUSED DISCONNECT SWITCH
[Symbol]	FUSED DISCONNECT SWITCH
[Symbol]	MOTOR WITH DESIGNATION
CONTROLS	
S	SINGLE POLE WALL SWITCH, TOP OF BOX AT 48" AFF
S _M	MANUAL MOTOR STARTER WITH OVERLOADS
COMMUNICATIONS	
[Symbol]	DATA/TELEPHONE OUTLET WITH 3/4" CONDUIT STUBBED UP TO ABOVE ACCESSIBLE CEILING, BOTTOM OF BOX AT 16", UNLESS NOTED OTHERWISE. PROVIDE WITH PULL STRING



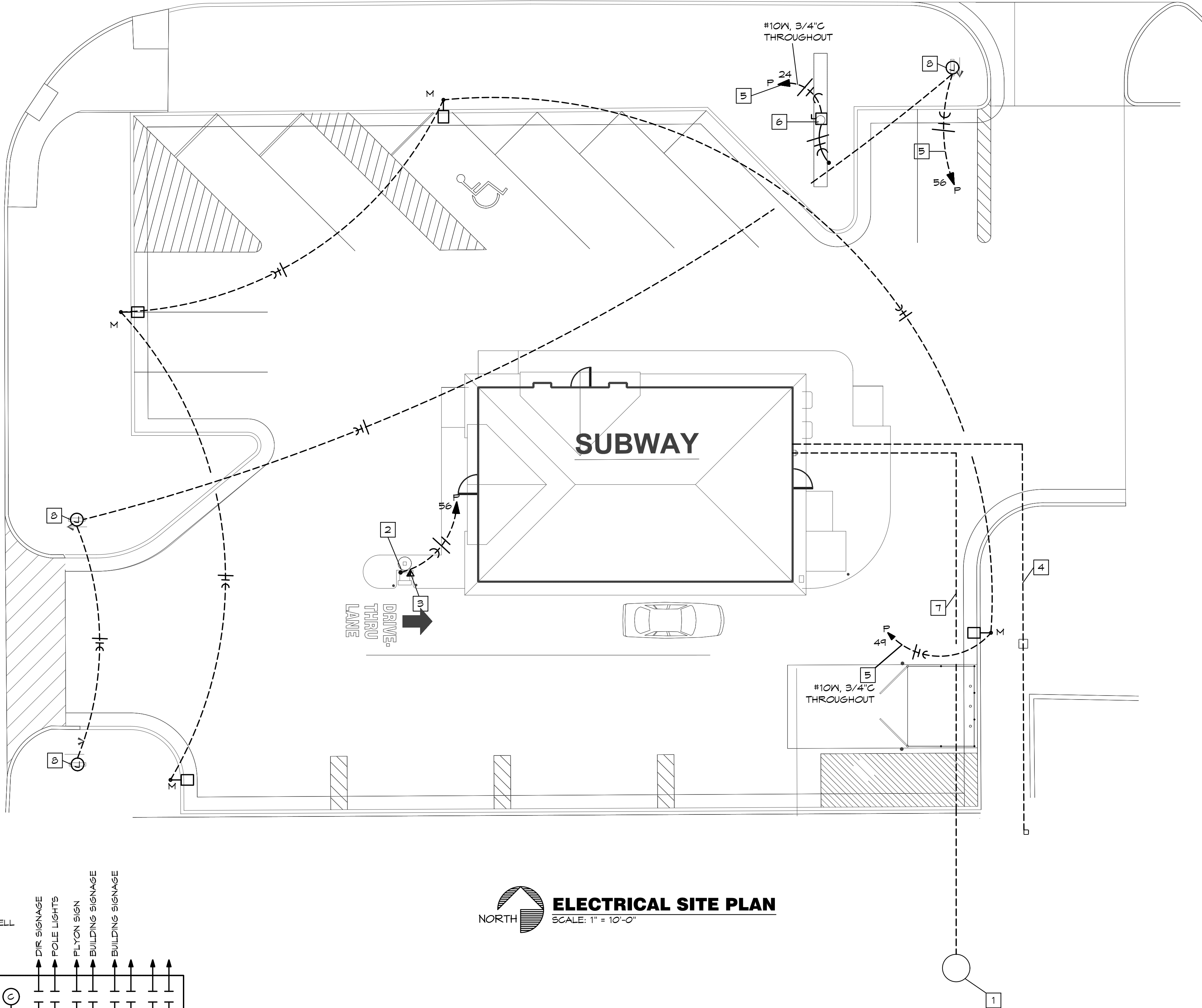
POLE FOUNDATION DETAIL
SCALE: NONE



EXTERIOR LIGHTING CONTROL DIAGRAM
SCALE: NONE

E. Main St. (Hwy. 37)

Cimarron Rd.



ELECTRICAL SITE PLAN
SCALE: 1" = 10'-0"

OKLAHOMA PE COA #CA1900PE
This drawing has been prepared by the Engineer, or under his supervision. This drawing is provided as an instrument of service by the Designer/Engineer and is intended for use on this project only. Pursuant to the Architectural Works Copyright Protection Act of 1990, all drawings, specifications, bills and designs, including the overall form, arrangement and composition of letters and elements appearing herein, constitute the original, copyrighted work of the Designer/Engineer. Any reproduction, use, or disclosure of information contained herein without prior written consent of the Engineer is strictly prohibited. © 2015 BC Engineers, Inc.

BC ENGINEERS
INCORPORATED

5720 Reeder Shawnee, Ks. 66203 (913)262-1772



SUBWAY SANDWICH SHOP
2 E. Main St.
Tuttle, Ok. 73089

DAN WINTER
ARCHITECT

1024 EAST
FIRST STREET
WICHITA, KS.
67214
PH. 316-267-7142

ELECTRICAL
SITE PLAN

DATE
NOV. 19, 2015

DRAWN BY:
NL/BH
CHECKED BY:
EK/DS

SHEET NO.
E2